



276 ELLSWORTH STREET

SAN FRANCISCO, CA 94110



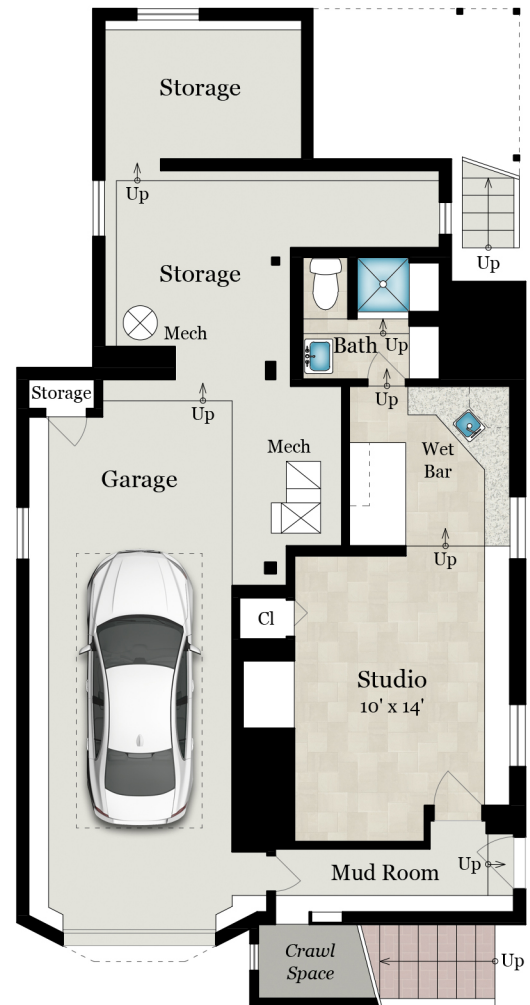
MAIN LEVEL

980 SQ FT

Estimated Total Finished Square Footage: 1,290 SQ FT

Above-Grade: 1,290 SQ FT Below-Grade: N/A
Plus 330 SQ FT Garage on Lower Level
Plus 205 SQ FT Storage on Lower Level
Plus 50 SQ FT Mud Room on Lower Level
Calculated per ANSI Standard Z765-2003.

* Estimated Total Finished & Unfinished Square Footage: 1,875 SQ FT



LOWER LEVEL

310 SQ FT - Finished
585 SQ FT - Unfinished